

Technical Information Packet



AUDITORIUM

503 N. PINE ST.

PITTSBURG, KS 66762

Contact Info:

Building

Main Line 620-231-7827

Fax 620-231-5967

maccinfo@pittks.org

www.memorialauditorium.org

General Manager

Chris Patterson

Office: 620-230-5552

Cell: 620-687-1627

chris.patterson@pittks.org

Event Manager

Jess Frasher

Office: 620-230-5542

jess.frasher@pittks.org

Technical Director

Kyle Newby

Office: 620-230-5547

Cell: 620-687-9231

kyle.newby@pittks.org

Office Coordinator

Olivia Wilcox

Office: 620-230-5632

olivia.wilcox@pittks.org

Technical Information Packet

General Information

Parking:

Parking is available around the building. More than 375 spaces are available in a 1-block radius.

Stage Type:

Proscenium 54' Wide x 24'6" High x 40' Deep

House Capacity:

1565 Main Floor 424, Balcony 1141,

1621 When seating pit 56

Labor:

Non-Union Hall

Crew:

Technical Director, Asst. Technical Director, Additional crew available upon request

Fly Space:

53' Fly gallery from Stage Floor to Gridiron

Single Purchase, manual-draw counter weighted system

27 Total Line-sets including 4 Electrics

Stage Information:

Electrical Power:

Company Switch: Two - 400 amp three phase

Lighting Dimmer Panel 40 Circuit "Front of House Plug Panel"

Loading Dock:

Slight Curved Driveway down off Alley into lower level

12' Wide x 15' Tall Garage Door

Pit Elevator Door 14' Wide by 12' Tall Sliding Door

Entire Pit is Hydraulic Lift

Loading Dock can accommodate up to a 48' Trailer

Pit Dimensions:

32' Wide x 10' Deep (Trapezoid shaped 31'8" at shortest width 36'10" at widest width)

Weight Capacity of 15,000 pounds

Pit height can be anywhere between basement level 18'6" deep for loading and Stage level.

Pit level with sound panels is at 7 – 9 feet below stage level.

Stage Dimensions:

90 feet wide stage house including wings 37 feet deep from curtain line

64' Wide performance stage

12' Stage Right Wing

14' Stage Left Wing

4' Deep Apron with Ramp entrances from house either side.

3' Wide Crossover behind last Batten

Technical Information Packet

Floor Type:

Battleship Linoleum on Oak Painted Flat Black

Stage Access:

Down Stage Apron Ramps

Down Stage Right Entrance from Stairwell

Up Stage Right Entrance from Greenroom

Stage Left from Shop Far left stairwell access to Loading dock and Lobby

Down Stage Left stairs from Stage Left Dressing Rooms

Stage Left Shop:

20' Upstage to Downstage (Pillar in center onstage side)

16' From Stage right to Stage Left

Fire Escape door Far Upstage Left

Stair Well Access Downstage Left

Dressing Rooms

Four Dressing Rooms Available. All are on next level up in the facility.

One Principal and One Company on each side of Stage.

Each Room has Mirrors with Lights, Chairs, Racks, Sinks, Toilets, and Showers.

Towels are available upon advanced notice

All have audio monitors from stage and TVs linked to Camera viewing Stage

Company Dressing Rooms have Fire Escape Exits

Green Room

Directly offstage right is the Green Room

Green Room has:

Refrigerator and Microwave with prep sink.

Bathroom with Toilet and Sink.

Table with 4 Chairs, Sofa with Built-in Recliners, Coffee Table, and Upright Piano.

Additional Table for Food Service.

TV with Stage view and Audio monitors.

Fire Escape Door

Stage Door:

Stage Door is on South side of facility directly off 5th Street.

It is down a Level from the Stage Level.

Technical Information Packet

Fly Line Positions: With Distance from Proscenium Line

The Grand Drape is able to function as guillotine or Traveler. Color is a Deep Green.

Mid Traveler and Rear Traveler are full Stage Blacks

1	Grand Drape	6"	15	Fourth Border	18' 6"
2	First Legs	1' 2"	16	Third Electric	19' 10"
3	First Electric	2' 6"	17	Fourth Legs	21' 10"
4	Open	3' 10"	18	Open	22' 10"
5	First Border	5' 10"	19	Fifth Border	25' 2"
6	Second Legs	6' 6"	20	Open	25' 10"
7	Open	7' 2"	21	Fifth Legs	26' 6"
8	Second Electric	8' 6"	22	Fourth Electric	27' 10"
9	Second Border	11' 10"	23	Sixth Border	29' 2"
10	Third Legs	12' 6"	24	Open	30' 5"
11	Open	13' 2"	25	Rear Traveler	30' 11"
12	Third Border	15' 2"	26	Open	31' 5"
13	Open	15' 6"	27	Sky Drop Cyclorama	31' 10"
14	Mid-Stage Traveler	17' 10"			

Sound:

Sound Booth:

Our booth is completely open in front of the Light booth at the back of the floor. It is centered in the Auditorium side to side. And is not under the Balcony. The Mixing position is 50 feet from the Curtain Line.

Sound Components:

<u>Sound Processing</u> Dante Digital Audio Signal Processor Nexo NX242 Digital TD controller DSP	<u>Console</u> Yamaha M7CL-48 with Meter Bridge
<u>Speakers</u> Nexo Geo S Tangent Stereo Array 16 total cabinets 8 per side Powered by 2 QSC PL380 amplifiers EAW Dual 18 Sub- Cabinets 1 per side Powered by QSC PL380 amplifiers EAW SL-52 Front Fills 4 total across front rail Powered by QSC ISA450 amplifiers	<u>Monitors</u> 4 Monitor Mix (Standard) Powered by 2 QSC ISA450 amplifiers 8 House Monitor System (Upon request) Yamaha MC2408 Monitor Console 4 QSC Model 1400 Stereo Amplifiers Yamaha Model Q2031 Graphic EQ for each channel 6 JBL MR905 Monitors 3 Galaxy Audio Hot Spot mini monitors
<u>House Snake</u> - Ran from Back Stage Left Proscenium to our Sound Booth under the floor 32 Channel Input 16 Returns	

Technical Information Packet

Intercom:

Clear-Com Two-Channel

Locations Throughout building:

Each Corner of Stage	Stage Left Shop
Sound Booth	Ticket offices
Light Booth	Spot Light Booths
Catwalk	Cove

House Paging is Available in Lighting Booth, at Stage Manager position Stage Right, and in the Ticket Booths.

Stage Lighting Control System:

- ETC Ion Lighting Control Console with one 2x10 fader panel
- Strand Century CD-80 Dimmer Bank 171 2.4K Dimmers 21 6K Dimmers
- 400 Amp "Company Switch" 2 available
- 40 Circuit "Catwalk Plug Panel" available

Electrics:

Front of House	40 Circuits		Circuit 7-46	
Cove (Directly Above Pit)	12 Circuits		Circuit 47-58	
1 st Electric	30 Circuits		Circuit 59-94	
2 nd Electric	20 Circuits		Circuit 95-115	
3 rd Electric	20 Circuits		Circuit 116-136	
4 th Electric – Cyc Electric	6 Circuits		Circuit 137-142	
Cyc Strip Circuits	161 A-D	163 A-D	165 A-D	167 A-D

Pockets:

1	Circuits 144, 146, 148	5	Circuits 169,171,173,175 C	9	Circuits 149, 151, 153
2	Circuits 150, 152, 154	6	Circuits 169,171,173,175 B	10	Circuits 143, 145, 147
3	Circuits 156, 158, 160	7	Circuits 169,171,173,175 A	11	Circuits 1, 3, 5
4	Circuits 169, 171, 173, 175 D	8	Circuits 155, 157, 159	12	Circuits 2, 4, 6

Dead Circuits:

33 100

Relays for LEDs are 77, 78, 105, 106, 125, 126, 139, 140

Lighting Instruments:

34	19° Source Four	2	ETC Palletta
31	26° Source Four	7	ADJ Mega-Bars
42	36° Source Four	12	Generic LED RGBW pars
28	50° Source Four	2	RGBW Mini Pars
27	Source Four ParNel	4	Chauvet LED Shadow Blacklights
17	ETC ColorSource Pars	4	Chauvet Rogue R2 Spot
7	ETC ColorSource Cycs	4	Chauvet Q-spot 250
2	36° Source Four EDLT Lens Tubes	1	Technobeam
4	Selador X7Xtra LED Strip Lights		

Technical Information Packet

Follow Spots:

Two Xenon Super Trouper, 1600 Watt Follow spot
With Option Telrads

Piano:

Five foot Steinway Baby Grand – Black Gloss Finish
Nine foot Steinway 1911 Concert Grand – Black Satin Finish

Orchestra:

Wenger Series 61 Rollaway Acoustical Shell – 7 Pieces
67 Music Stands

Video Recording/Streaming:

1	Newtek TriCaster TC410 Plus	Fully equipped with hardline ethernet to accommodate streaming configurations. Control surface for live mixing graphics and camera transitions, with PTZ controller.
1	JVC GY-HC500U	4K Video Camera Recorder 3-ring 4K lens with 20x optical zoom (f=28-560mm, 35mm equivalent), 40x lossless digital dynamic zoom with 7" camera top monitor and Rocker Zoom control on tripod.
2	Newtek NDIHX-PTZ2	Full HD 1080p60 PTZ Video Camera 20x optical Zoom Ration, f=110-5.3mm with a 56-degree horizontal field of view. Maximum Aperture f/1.6 to 3.8. Movement range of Pan: 340-degree (-170 to 170 degree) Tilt: 120-degree (-30 to 90 degree)

TriCaster is Audio fed directly from Sound Console via a Matrix sending the Main House Mix.

Projection:

1	Epson Pro L1755UNL Lumen 4K Laser Projector	ELPLU04 Short-Throw Lens – Zoom Ratio: 1.0 - 1.2x Throw Ratio (4.3): 0.89 - 1.08 Throw Ratio (16:10): 0.87 - 1.05 ELPLM15 Medium-Throw Lens – Zoom Ratio: 1.0 to 1.6x F-number: 1.8-2.35 Focal Length: 36.0-57.4 mm
1	BenQ SP920P 6,000 Lumen DLP	Native Aspect 4:3 Standard Zoom 1.15:1 Throw Ratio 1.68:1 – 1.95:1
2	BenQ MH680 3,000 Lumen DLP	Native Aspect 16:9 Standard Zoom 1.30:1 Throw Ratio 1.15:1 – 1.50:1
1	Sanyo PLC-WXU30 3,700 Lumen DLP	Native Aspect 16:10 Standard Zoom 1.60:1 Throw Ratio 1.19:1 – 1.88:1
1	Da-Lite 8' x 12' Screen	Can hang on a line set or stand on the floor
2	Portable Tri-Pod Screens	Collapsible

Technical Information Packet

Video Playback:

1	Sony SLV-D300P DVD/VHS combo player
1	Sony BDP-S3100 Blu-Ray Player
2	Samsung BD-JM57 Blu-Ray Player (Wi-fi built-in)
1	Dell Precision T3600 Equipped with Isadora, Pro-Presenter, PowerPoint

Audio Playback:

1	Tascam CD-RW900SL
1	Tascam MD 350
1	Optimus SCT-49 Stereo Cassette Deck
1	Numark TTusb Turntable with USB Audio Interface
1	Steinberg UR44 USB Audio Interface
3	Peavy USB-P USB Audio Interface
1	Dell OptiPlex 3050 Equipped with Show Cue Systems Playback, Audacity, Spotify

Supplemental Sound Equipment:

1	dbx iEQ-31 Dual 31-Band Graphic EQ/Limiter with Type V NR and AFS
1	Yamaha SPX900 Multi-Effect Processor
1	Alesis NanoVerb 18 Bit Digital Effects Processor
1	Sampson S-com 4 Four-Channel Compressor/Gate
2	QSC Model ISA 280 Amplifiers
1	QSC TouchMix-16 Digital Mixer
2	Mackie SRM650 1600 watt 15" 2 way powered speaker w/ tripod stands
2	Mackie SRM1850 1600 watt powered subwoofer

Available Audio Adapters:

Auditorium Gear			
Qty	End 1	End 2	Type
7	1/4" Female	RCA Male	Connector
4	1/4" TRS Female	1/8" TRS Male	Connector
2	1/4" TRS Male	RCA Female (x2)	Dongle
2	1/4" TRS Male	1/4" TS Male (x2)	Short Cable
5	1/4" TRS Male	XLR Male	Short Cable
7	1/4" TRS Male	TA4 (bodypack)	Short Cable
1	1/4" TS Female	1/4" TS Male (x2)	Dongle
3	1/4" TS Male	RCA Female (x2)	Dongle
4	1/4" TS Male	RCA Female (x2)	Dongle
2	1/8" TRS Female	1/4" TRS Male	Connector
1	1/8" TRS Female	RCA Male (x2)	Dongle
1	1/8" TRS Male	1/4" TS Male (x2)	Short Cable
1	1/8" TRS Male	RCA Male (x2)	Short Cable
1	1/8" TRS Male	XLR Male	Short Cable
1	1/8" TRS Male	1/8" TRS Female	Cable

Technical Information Packet

Audio Adapters Continued:			
1	1/8" TRS Male	RCA Male (x2)	Cable
1	3/32" TRRS Male	1/8" ? Female	Dongle
10	BNC Female	RCA Male	Connector
6	BNC Female	BNC Female	Coupler
2	BNC Male	RCA Male	Connector
1	BNC Male	BNC Female	Gender Changer
2	Coax, SPDIF	RCA, 1/8"	Powered DAC
1	Lightning	1/8" TRRS Female	Dongle
1	Lightning	1/8" TRRS Female + Lightning	Dongle
6	RCA Female	RCA Female	Coupler
1	RCA Female (x2)	RCA Female (x2)	Coupler
1	RCA Female (x2)	RCA Female	Connector
1	RCA Male	RCA Female (x2)	Dongle
2	RCA Male	XLR Female	Cable
2	RCA Male	XLR Male	Cable
1	RCA Male (x2)	XLR Female	Cable
1	RCA Male (x2)	RCA Female (x2)	Cable
2	USB	XLR Male (x2)	DAC
2	USB-C	1/8" TRRS Female	Dongle
2	XLR Female	XLR Male	Attenuator
1	XLR Female	XLR Male	RFI Filter
3	XLR Female	1/4" TS Male	Short Cable
5	XLR Female	1/4" TRS Male	Short Cable
5	XLR Male	XLR Male	Coupler
Lower Level Gear			
Qty	End 1	End 2	Type
1	1/4" TRS Female	1/8" TRS Male	Connector
1	1/4" TRS Female	RCA Female (x2)	Dongle
1	1/4" TRS Female	1/4" TRS Female	Coupler
2	1/4" TRS Male	TA4 (bodypack)	Short Cable
2	1/4" TS Female	RCA Female (x2)	Dongle
2	BNC Female	RCA Female	Connector
1	Coax, Optical	RCA Female (x2)	Powered DAC
1	Lightning	1/8" TRRS Female	Dongle
1	USB	XLR Male (x2)	DAC
1	USB-C	1/8" TRRS Female	Dongle

Technical Information Packet

Microphone List:

Wireless:

15	Shure ULXD4 Receivers G50 470-534 MHz
4	Shure ULXP Receivers J1 554-590 MHz
13	Shure ULXD1 Digital Bodypack Transmitter G50
2	Shure ULXD2 Beta 58 Digital Handheld Transmitter G50
4	Shure ULX2 SM58 Handheld Transmitter J1

Wired:

5	Shure SM58	3	Sennheiser e604 Percussion Mic
4	Shure SM57	1	AKG D112 MKII Bass Drum Mic
4	Shure SM81	6	Crown PCC160 Boundary Mic
3	Nady PCM-200	2 mounted on board for Piano Mic	
2	AKG C 451 EB	4	Shure MX391/S Boundary Mic
2	Electro-Voice 671BL	3	Audio Technica ES933/H Hanging Mics
1	Shure 545SH Unidyne III	3	OSP Direct One DB-01 Direct Box

Microphone Stands:

8	Straight Stands	2	Table Top Stands
7	Tripod Stands	12	Booms for Stands
4	Short Tripod Stands		

Supplemental Equipment/Adapters

1	USB Slim Drive External CD Reader/Writer
1	Bestduplicator DVD/CD Duplicator (1 to 5 target)
1	Belkin 7 port USB Hub
1	Pluggable 7-Port Hub with Dual Charging Ports
2	Matrox Triplehead2Go Digital Edition
1	Matrox Triplehead2Go DP Edition
1	Cable Matters HDMI over Cat 6 Transmitter/Receiver

Available Video Adapters

Auditorium Gear			
QTY	End 1	End 2	Type
1	VGA	DVI-I Dual Link	Connector
1	USB C	VGA, HDMI	Dongle
2	USB 3.0	HDMI	Dongle
1	USB 3.0	HDMI (x2)	Dongle
3	USB 3.0	DVI-I Dual Link	Dongle
1	RCA (3 input sets)	RCA (1 output)	Splitter
2	RCA	HDMI	Active Converter
1	Mini DisplayPort	HDMI	Dongle

Technical Information Packet

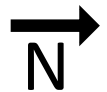
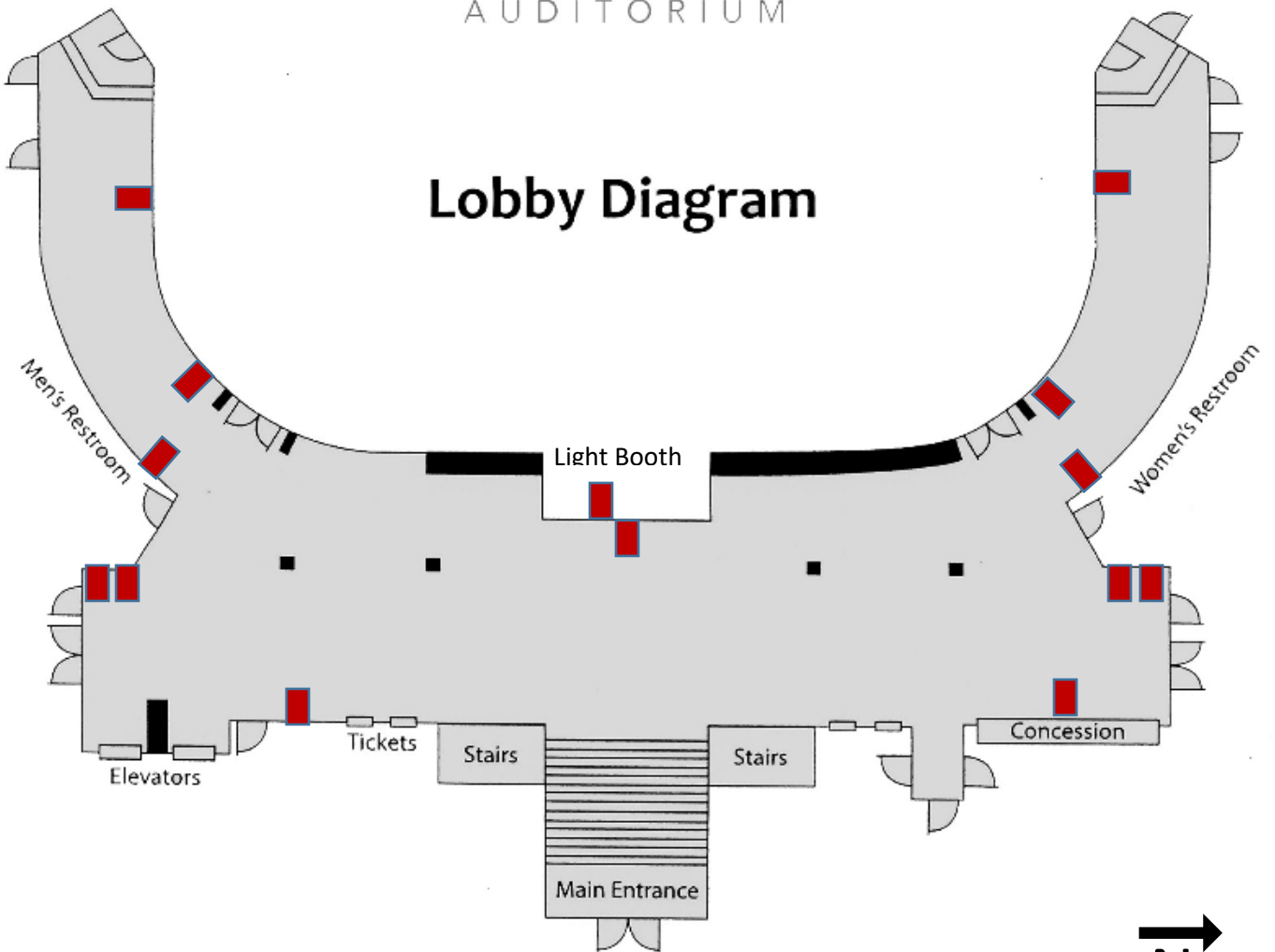
Video Adapters Continued:			
1	Mini DisplayPort	DisplayPort	Dongle
1	Mini DisplayPort	VGA, DVI-D Dual Link, HDMI	Dongle
1	HDMI	HDMI	Coupler
1	HDMI	DisplayPort	Short Cable
1	HDMI	VGA	Short Cable
1	HDMI	VGA	Dongle
1	DVI-I Dual Link	VGA	Connector
3	DVI-D Single Link	HDMI	Connector
4	DVI-D Dual Link	HDMI	Connector
2	DVI-D Dual Link	DVI-D Dual Link	Active Extender
1	DVI-D Dual Link	HDMI	Cable
1	DMS-59	DVI-I Dual Link (x2)	Y Splitter
1	DisplayPort	HDMI	Dongle
2	DisplayPort	VGA	Short Cable
1	DisplayPort	DVI-I Dual Link	Dongle
2	DisplayPort	VGA	Dongle
1	Apple 30-pin	VGA	Dongle
1	Apple 30-pin	HDMI + 30-pin	Dongle
Lower Level Gear			
Qty	End 1	End 2	Type
1	VGA, 1/8" Female	HDMI	Active Converter
1	VGA, 1/8" Female	HDMI	Connector
1	VGA	HDMI	Dongle
1	USB 3.0	HDMI	Dongle
1	Mini/Micro HDMI	HDMI	Dongle
1	Mini DisplayPort	DisplayPort	Connector
1	Mini DisplayPort	VGA, USB	Dongle
1	Mini DisplayPort	HDMI	Dongle
1	HDMI Female	HDMI Female	Coupler
1	HDMI	VGA	Dongle
1	DVI-I Dual Link	VGA, USB	Cable
1	DVI-D Dual Link	HDMI	Connector
1	DisplayPort	HDMI	Dongle


Memorial Auditorium is both an Auditorium and Convention Center. Floor Space is available for rehearsals. Contact the Office Coordinator or Event Manager for availability, scheduling and rates.

Technical Information Packet

MEMORIAL AUDITORIUM

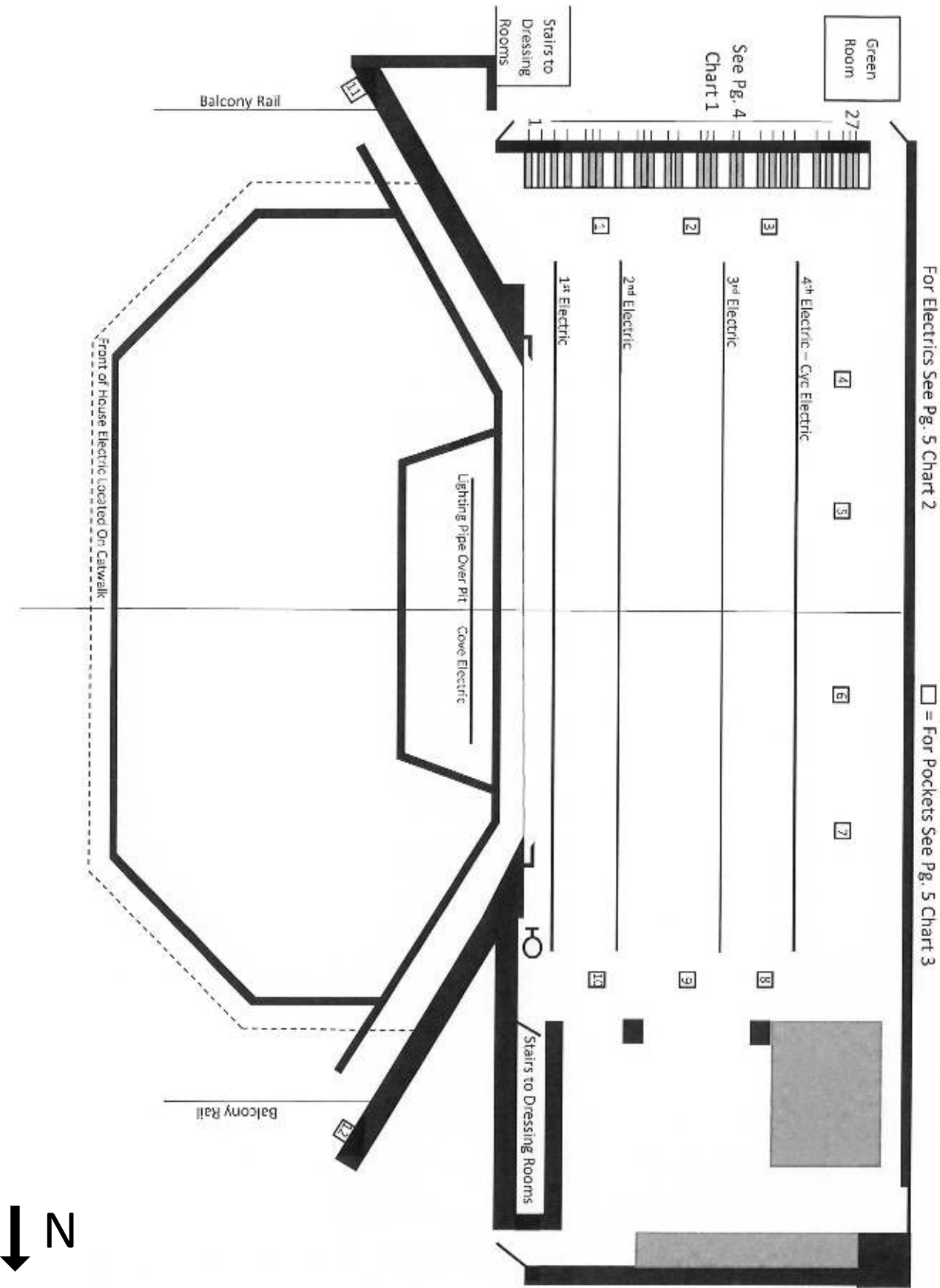
Lobby Diagram



 = Duplex Box

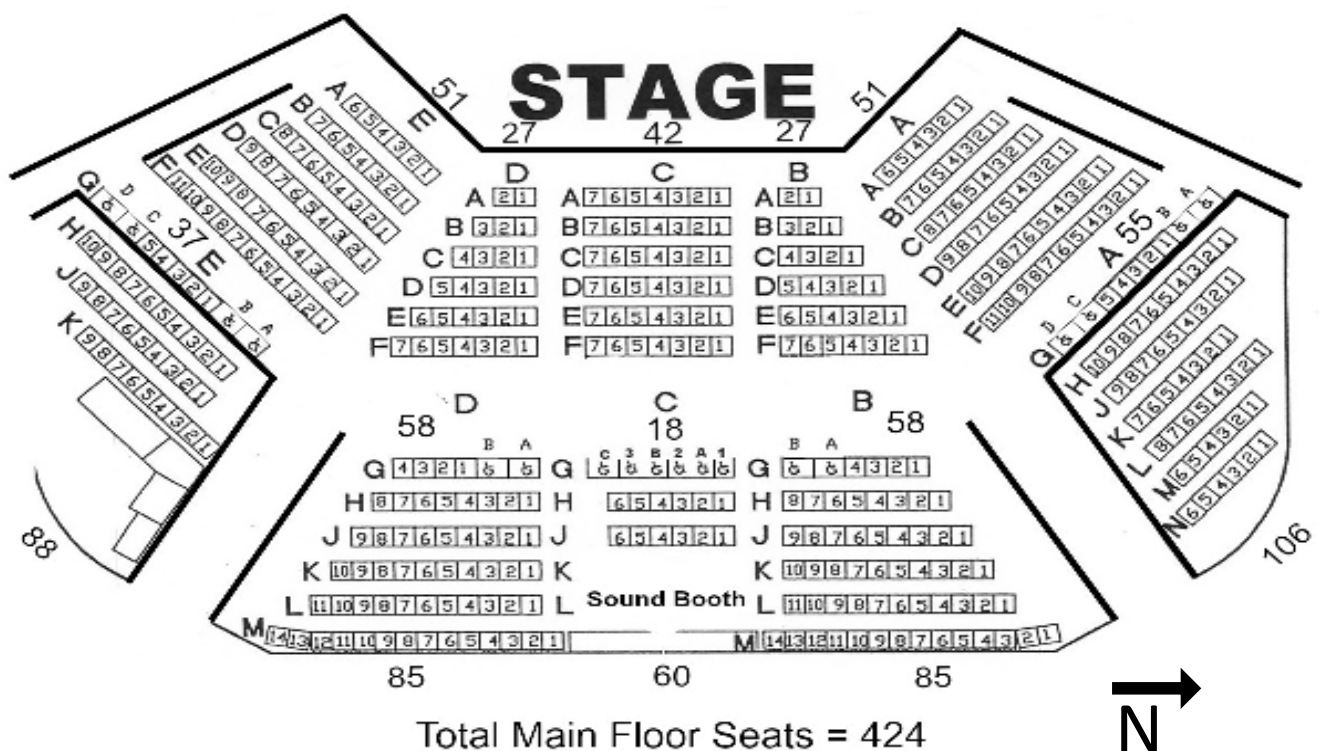
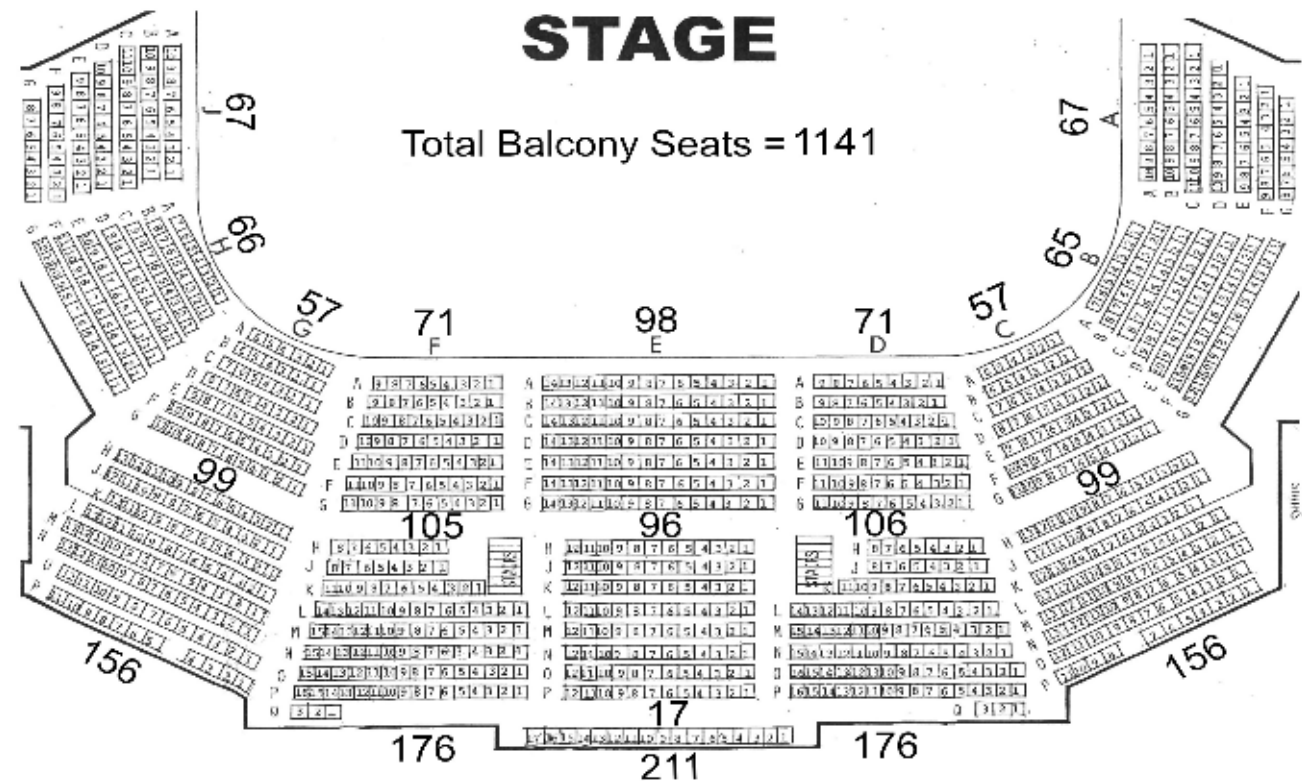
Technical Information Packet

Stage / Catwalk / Balcony Electric



Technical Information Packet

Seating Capacity



Technical Information Packet

View from Stage



View from Balcony



Technical Information Packet

Stage / Pit / Catwalk / Cove / Clouds



Catwalk / Cove / Clouds

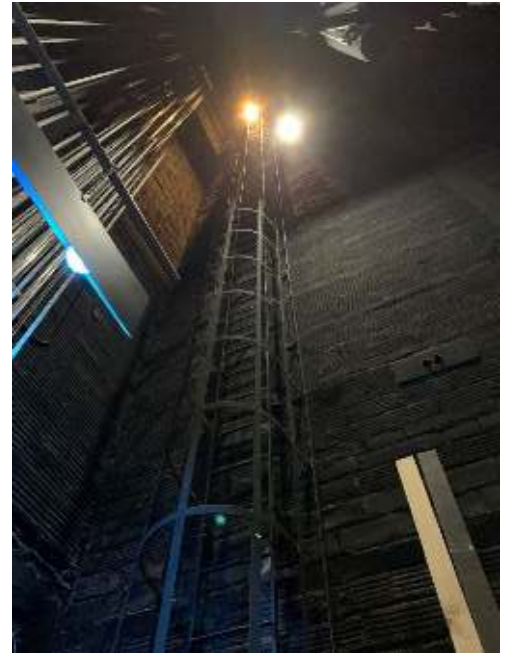


Technical Information Packet

Grid



Access to Grid



Flyrail



Technical Information Packet

Front Entrance



Front Handicap Entrance



Stage Entrance

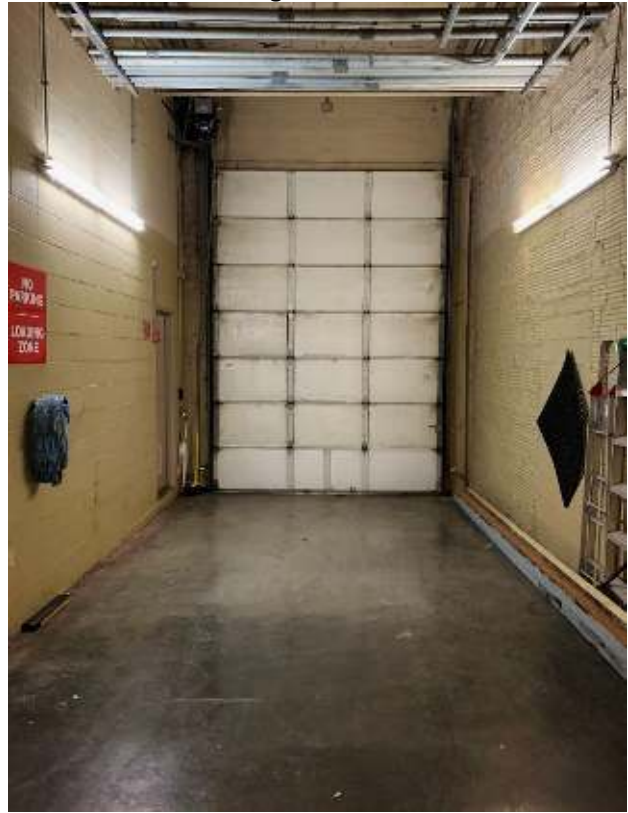


Technical Information Packet

Loading Dock



Inside View of Loading Dock



Outside View from Loading Dock



Loading Dock / Alley



Technical Information Packet

Sound Booth



Sound Booth / Light Booth



Technical Information Packet

Light Booth Entrance



Light Booth



Sound Console Dante Line



Sound Main Outputs



Sound Console All Outputs



Technical Information Packet

Green Room



Stage Door / Piano / Stage Monitor- TV in Green Room



Green Room Kitchen Area



Green Room Facilities



Technical Information Packet

Star Dressing Room



Company Dressing Room



Company Hair Dryer / Sink Area



Company Dressing Room



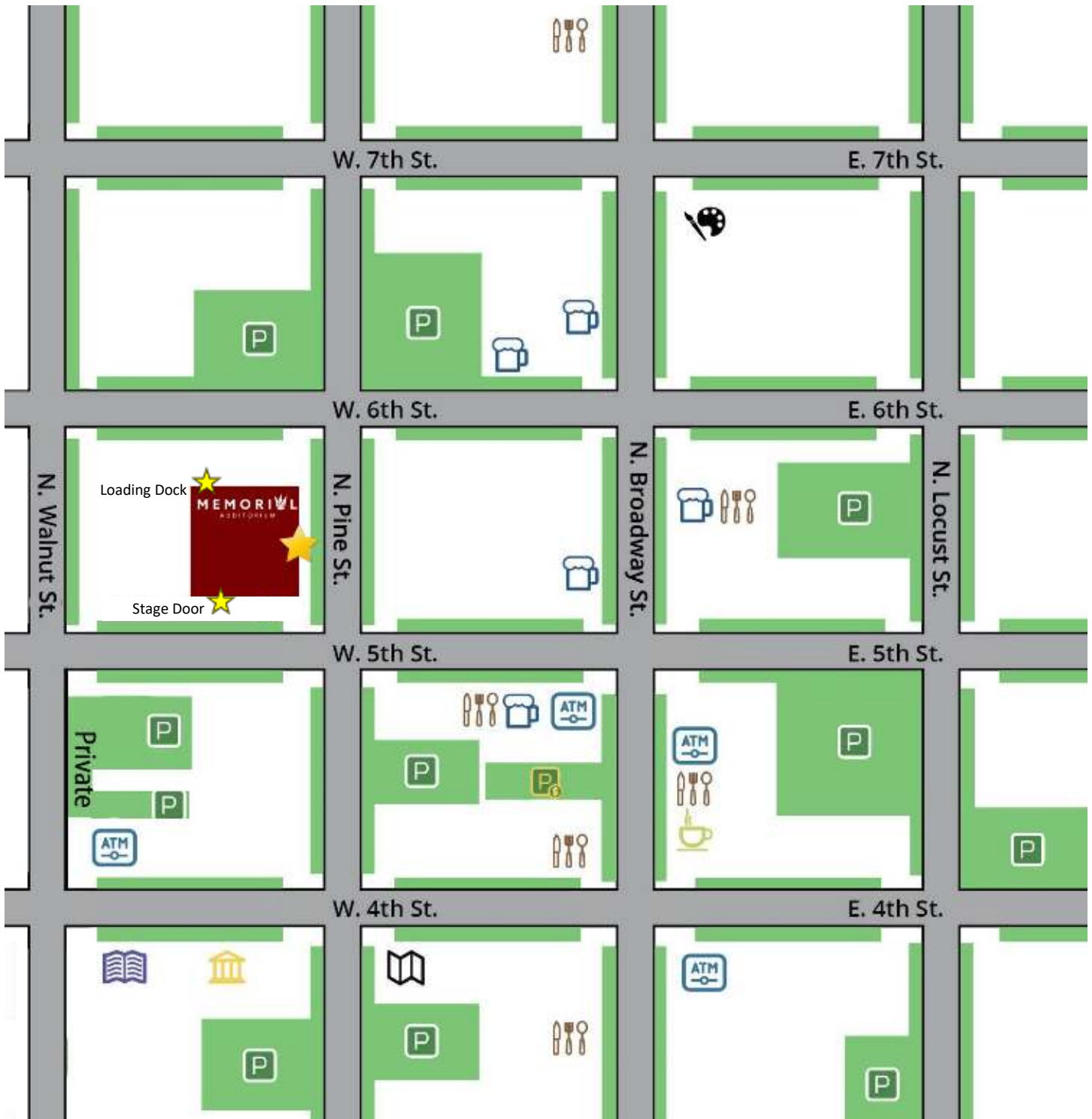
Company Dressing Room Facilities



Technical Information Packet



Parking Map



Technical Information Packet

N →

Aerial View



N →

Larger Aerial View

