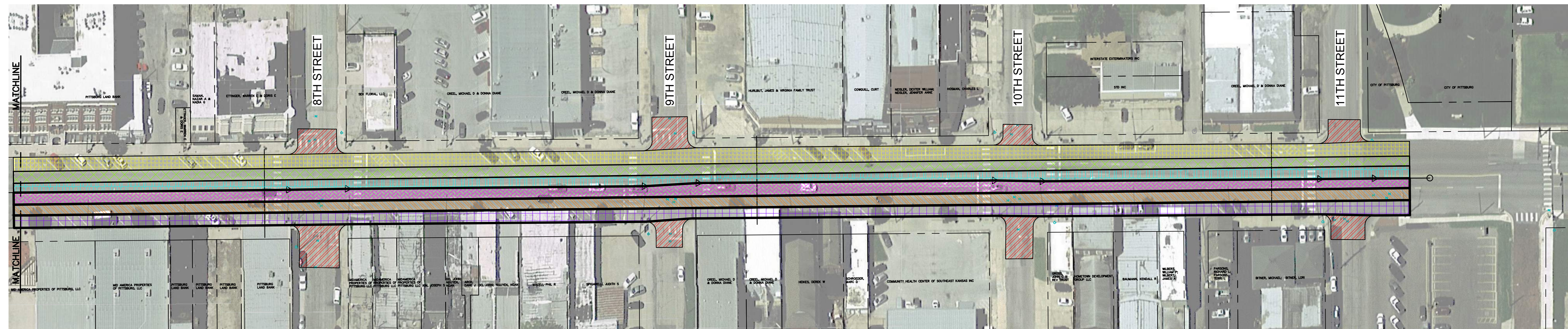
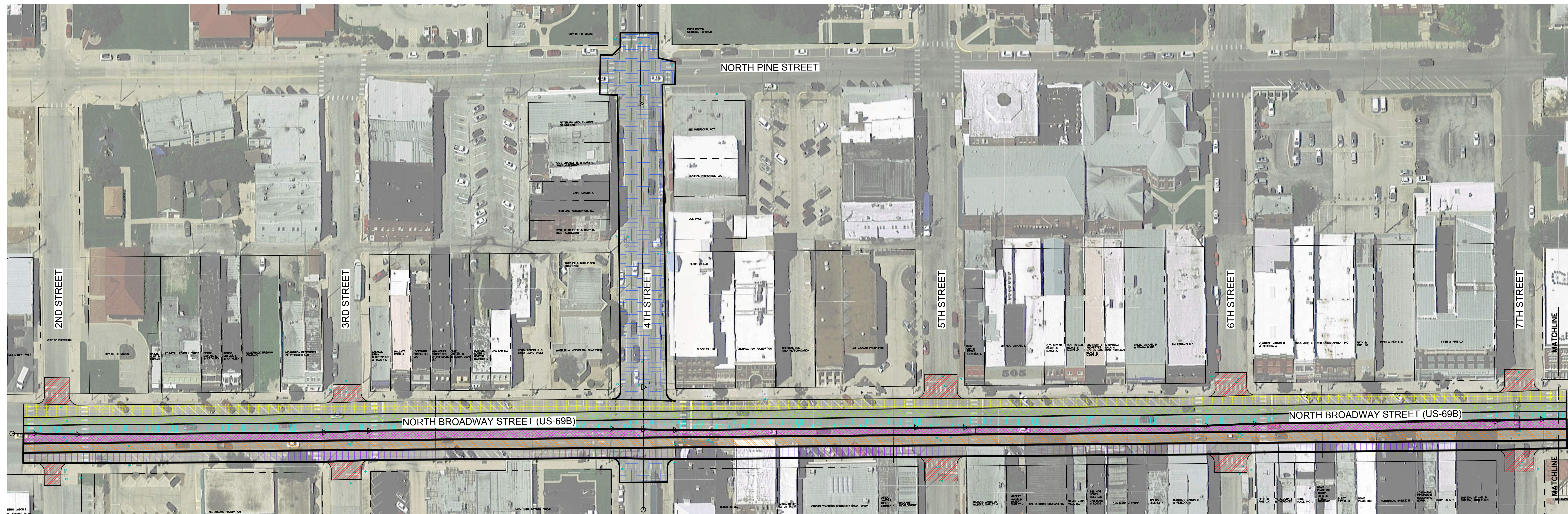


STATE	PROJECT NO.	YEAR	SHEET NO.	TOTAL SHEETS
KANSAS	019 U-2388-01	2021	33	34



- NOTES: OPTION 1

- LONGEST CONSTRUCTION DURATION
- MODERATE PARKING RESTRICTION
- LEAST RESTRICTIVE TO THROUGH TRAFFIC
- WEST SIDE PARKING ELIMINATED DURING PHASES 3, 4, AND 5
- EAST SIDE PARKING ELIMINATED DURING PHASES 6, 7, AND 8

PHASE 1 ALL SIDE STREETS

PHASE 2 4TH STREET

PHASE 3 - WEST SIDE PARKING

PHASE 4 - WESTERN SOUTHBOUND LANE

	PHASE 5 – EASTERN SOUTHBOUND LANE
	PHASE 6 – WESTERN NORTHBOUND LANE
	PHASE 7 – EASTERN NORTHBOUND LANE
	PHASE 8 – EAST SIDE PARKING

KANSAS DEPARTMENT OF TRANSPORTATION

PHASING PLAN

OPTION 1

CCLIP-SP PROJECT, FY 2022

CITY OF PITTSBURG, KANSAS - CRAWFORD COUNTY

olsson

OLSSON - CIVIL ENGINEERING 306 N. BROADWAY / STE. 175 / PITTSBURG, KS 66762
KANSAS CERTIFICATE OF AUTHORITY # E-516 620-670-5100 / olsson.com

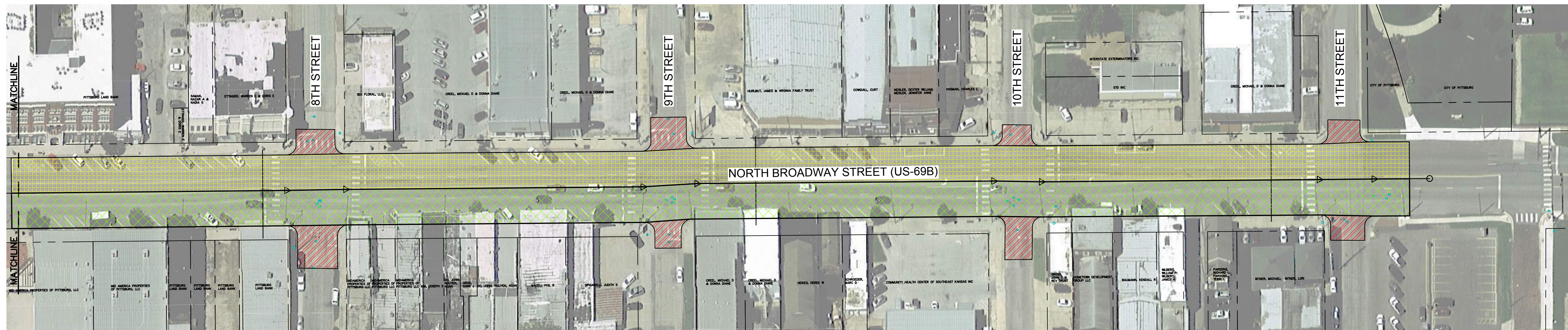
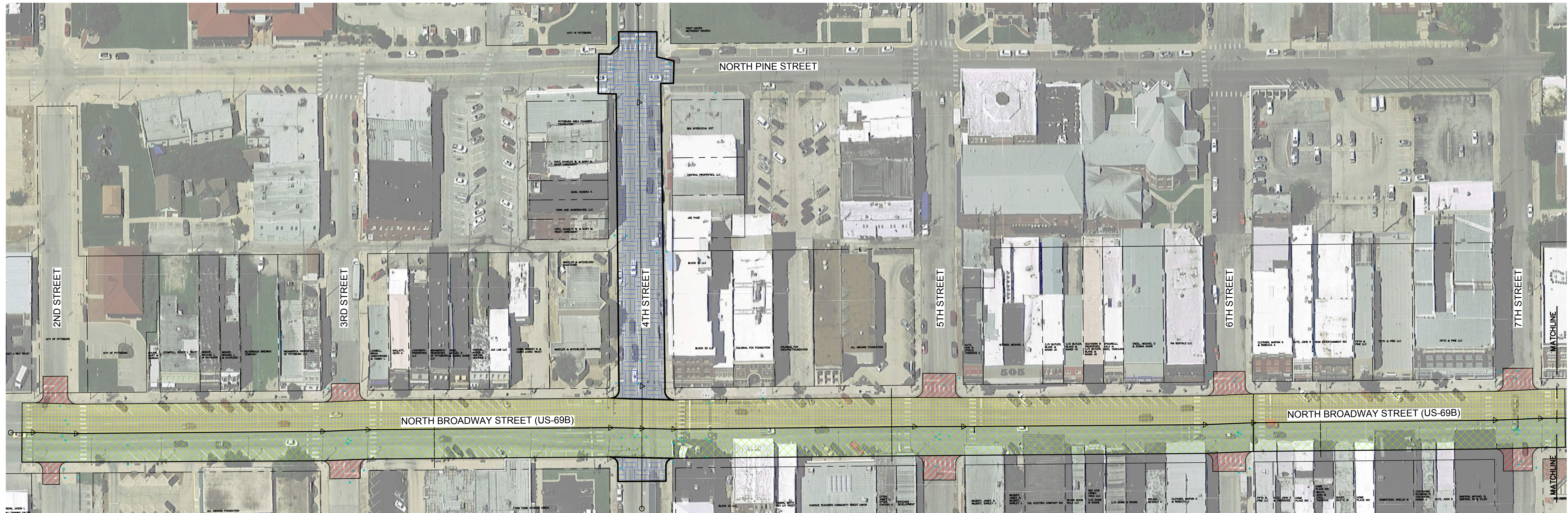
checked by: JHS	date: 2/15/2021	33 SHEET OF 34
drawn by: QTK	project no.: 004-04010	

DWG: F:\2021\01501-02000\021-01910\40-Design\AutoCAD\Final Plans\Sheets\GNCV\C_PHASEING-DRAFT_02101910.dwg
XREFS: C:\PTBLK_02101910 C:\AERL_02101910 C:\XBN DY_02101910 CITY

WATER	DATE	CITY UTILITIES - SANITARY SEWER	BY	APP'D
: bcdomes				

BY	ADD'N

STATE	PROJECT NO.	YEAR	SHEET NO.	TOTAL SHEETS
KANSAS	019 U-2388-01	2021	32	34



- NOTES: OPTION 2A**
- SHORTEST CONSTRUCTION DURATION
 - SEVERE PARKING RESTRICTION
 - THROUGH TRAFFIC MAINTAINED
 - NO PARKING EITHER SIDE DURING PHASES 3 AND 4

PHASE 1 ALL SIDE STREETS

PHASE 2 4TH STREET

PHASE 3 — WEST HALF BROADWAY 2ND THRU 11TH

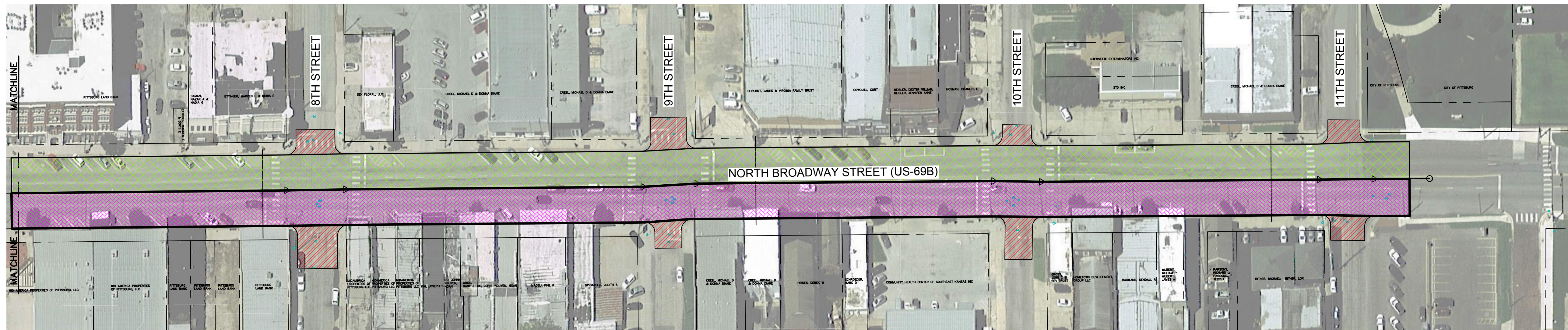
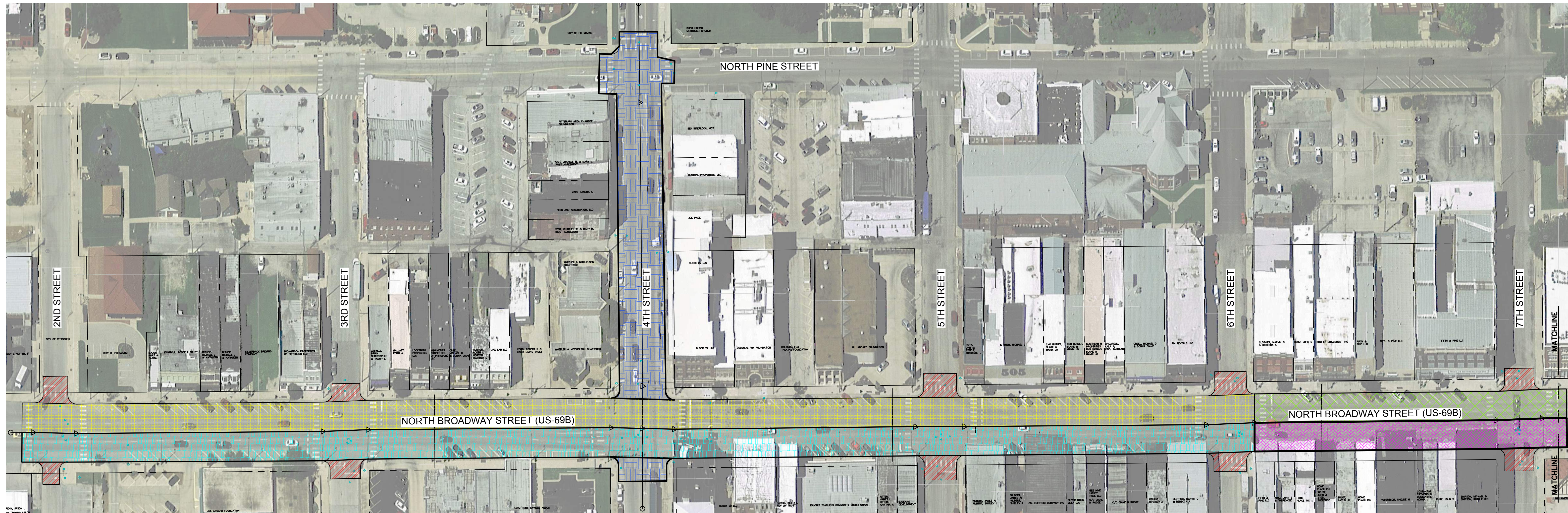
PHASE 4 — EAST HALF BROADWAY 2ND THRU 11TH

KANSAS DEPARTMENT OF TRANSPORTATION
PHASING PLAN
OPTION 2A
CCLIP-SP PROJECT, FY 2022
CITY OF PITTSBURG, KANSAS - CRAWFORD COUNTY

olsson

OLSSON - CIVIL ENGINEERING		306 N. BROADWAY / STE. 175 / PITTSBURG, KS 66762	
KANSAS CERTIFICATE OF AUTHORITY # E-516		620-670-5100 / olsson.com	
checked by: JHS	date: 2/15/2021	32	SHEET OF 34
drawn by: CTK	project no.: 021-01910		

STATE	PROJECT NO.	YEAR	SHEET NO.	TOTAL SHEETS
KANSAS	019 U-2388-01	2021	32	34






- NOTES: OPTION 2B**
- MODERATE CONSTRUCTION DURATION
 - MODERATE PARKING RESTRICTION
 - THROUGH TRAFFIC MAINTAINED
 - NO PARKING EITHER SIDE FROM 2ND STREET TO 6TH STREET DURING PHASES 3 AND 4
 - NO PARKING EITHER SIDE FROM 6TH STREET TO 11TH STREET DURING PHASES 5 AND 6

PHASE 1 ALL SIDE STREETS

PHASE 2 4TH STREET

PHASE 3A - 2ND THRU 6TH

	PHASE 3B – 6TH THRU 11TH
	PHASE 4A – 2ND THRU 6TH
	PHASE 4B – 8TH THRU 11TH

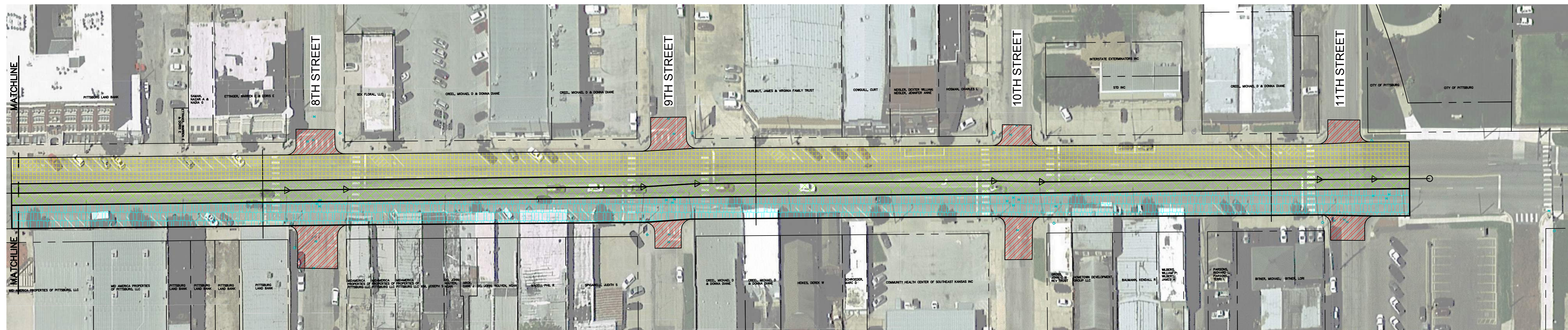
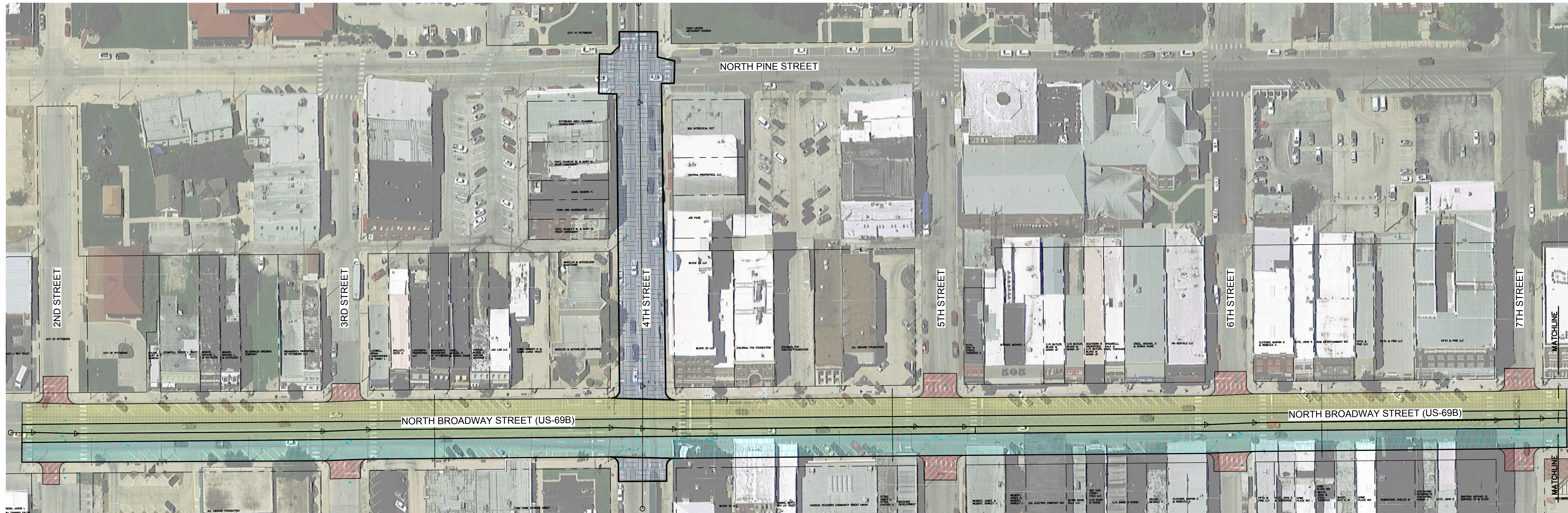
KANSAS DEPARTMENT OF TRANSPORTATION
PHASING PLAN
OPTION 2B
CCLIP-SP PROJECT, FY 2022
CITY OF PITTSBURG, KANSAS - CRAWFORD COUNTY

olsson

OLSSON - CIVIL ENGINEERING 306 N. BROADWAY / STE. 175 / PITTSBURG, KS 66762
 KANSAS CERTIFICATE OF AUTHORITY # E-516 620-670-5100 / olsson.com

checked by: JHS	date: 2/15/2021	32 SHEET OF 34
drawn by: CTK	project no.: 021-01910	

STATE	PROJECT NO.	YEAR	SHEET NO.	TOTAL SHEETS
KANSAS	019 U-2388-01	2021	33	34



- NOTES: OPTION 3**
- MODERATE CONSTRUCTION DURATION
 - MODERATE PARKING RESTRICTION
 - LEAST RESTRICTIVE TO THROUGH TRAFFIC
 - WEST SIDE PARKING ELIMINATED DURING PHASES 3 AND 4
 - EAST SIDE PARKING ELIMINATED DURING PHASES 4 AND 5

PHASE 1 ALL SIDE STREETS


PHASE 2 4TH STREET

PHASE 3 - WEST SIDE PARKING + WESTERN SOUTHBOUND LANE

PHASE 4 – MIDDLE TWO LANES
(EASTERN SOUTHBOUND LANE + WESTERN NORTHBOUND LANE)

PHASE 5 – EAST SIDE PARKING + EASTERN NORTHBOUND LANE

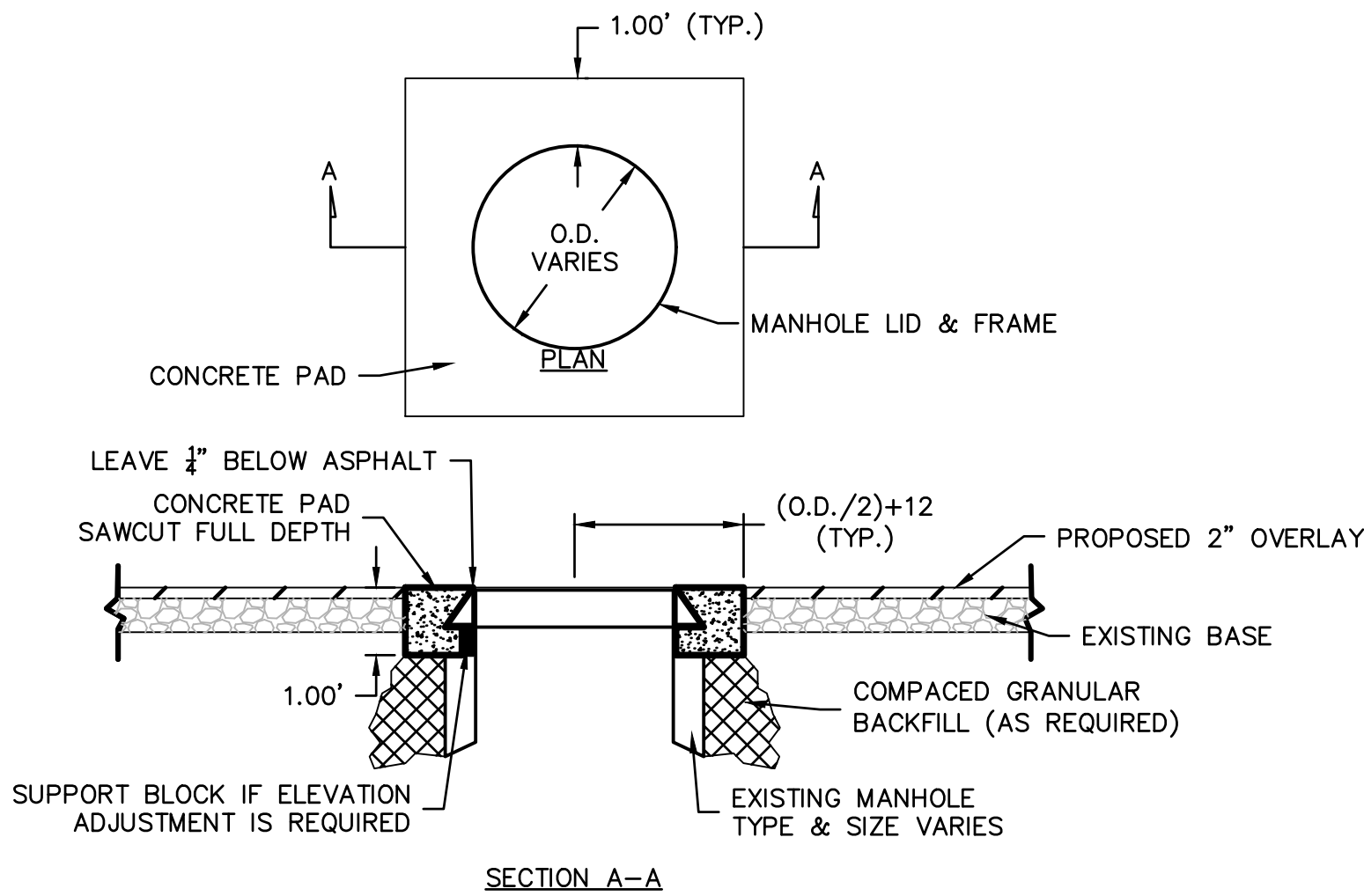
KANSAS DEPARTMENT OF TRANSPORTATION
PHASING PLAN
OPTION 3
CCLIP-SP PROJECT, FY 2022
CITY OF PITTSBURG, KANSAS - CRAWFORD COUNTY

			
OLSSON - CIVIL ENGINEERING		306 N. BROADWAY / STE. 175 / PITTSBURG, KS 66762	
KANSAS CERTIFICATE OF AUTHORITY # E-516		620-670-5100 / olsson.com	
checked by: LHS	date: 2/15/2021	<div style="font-size: 24pt; font-weight: bold;">33</div> <div style="font-size: 24pt; font-weight: bold;">SHEET</div> <div style="font-size: 24pt; font-weight: bold;">OF 34</div>	
drawn by: GTK	project no.: 021-01910		

[illegible]

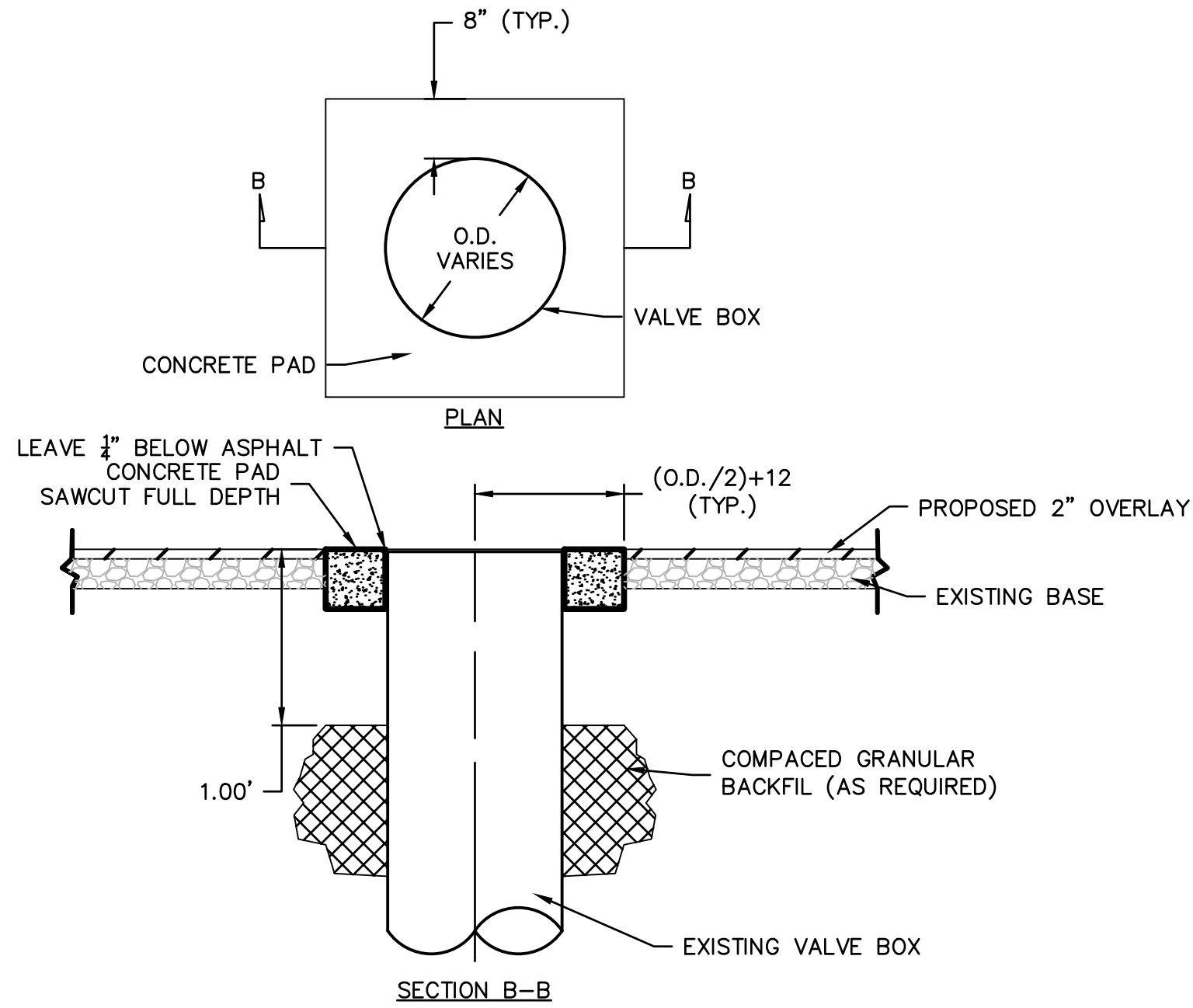
DWG: F:\2021\01501-02000\021-01910\40-Design\AutoCAD\Final Plans\Sheets\GNCV\C_PHASING-DRAFT_02101910.dwg
DATE: Feb 15, 2021 5:08pm XREFS: C_PTBK_02101910 C_AERL_02101910 C_XBNDY_02101910 CITY_

STATE	PROJECT NO.	YEAR	SHEET NO.	TOTAL SHEETS
KANSAS	019 U-2388-01	2021	3	34



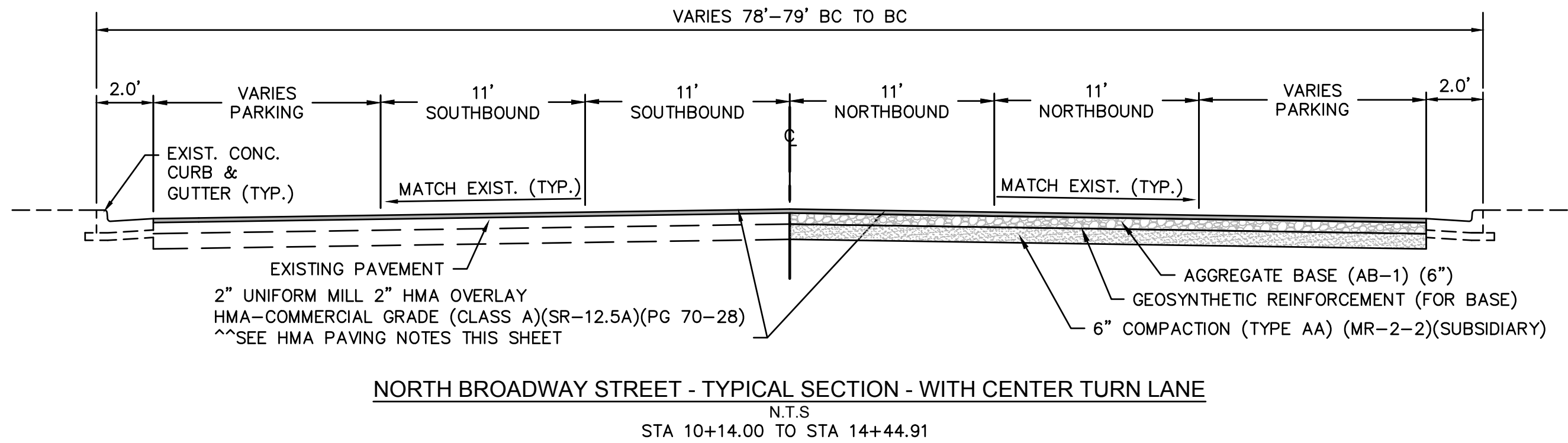
MANHOLE CONCRETE PAD DETAIL

- NOTES:
1. THE CONTRACTOR SHALL INSURE THAT THE INTERIORS OF ALL MANHOLES ARE CLEAR OF ALL DEBRIS IMMEDIATELY AFTER CONSTRUCTION OF THE CONCRETE PAD.
 2. MANHOLE CONCRETE PADS SHALL BE CONSTRUCTED WITHIN 5 DAYS FOLLOWING CONSTRUCTION OF THE ASPHALT OVERLAY.
 3. ANY MANHOLES NOT SHOWN ON THESE PLANS BUT DISCOVERED DURING THE MILLING PROCESS, SHALL BE ADJUSTED AS REQUIRED WITH CONCRETE PADS.
 4. CONCRETE FOR MANHOLE CONCRETE PADS MUST MEET THE REQUIREMENTS FOR KDOT GRADE 4.0 CONCRETE.
 5. MEASUREMENT & PAYMENT: THE ENGINEER WILL MEASURE MANHOLE CONCRETE PADS PER EACH CONCRETE PAD INSTALLED AND ACCEPTED. PAYMENT FOR "MANHOLE CONCRETE PADS" AT THE CONTRACT UNIT PRICE SHALL BE CONSIDERED FULL COMPENSATION FOR THE SPECIFIED WORK, INCLUDING, BUT NOT LIMITED TO, ALL SAWCUTTING, REMOVALS/DISPOSALS OF EXISTING MATERIAL, CONCRETE, ADJUSTMENT BLOCKS/RINGS, LABOR, MATERIALS, AND INCIDENTALS FOR EACH CONCRETE PAD INSTALLED AND ACCEPTED IN PLACE.

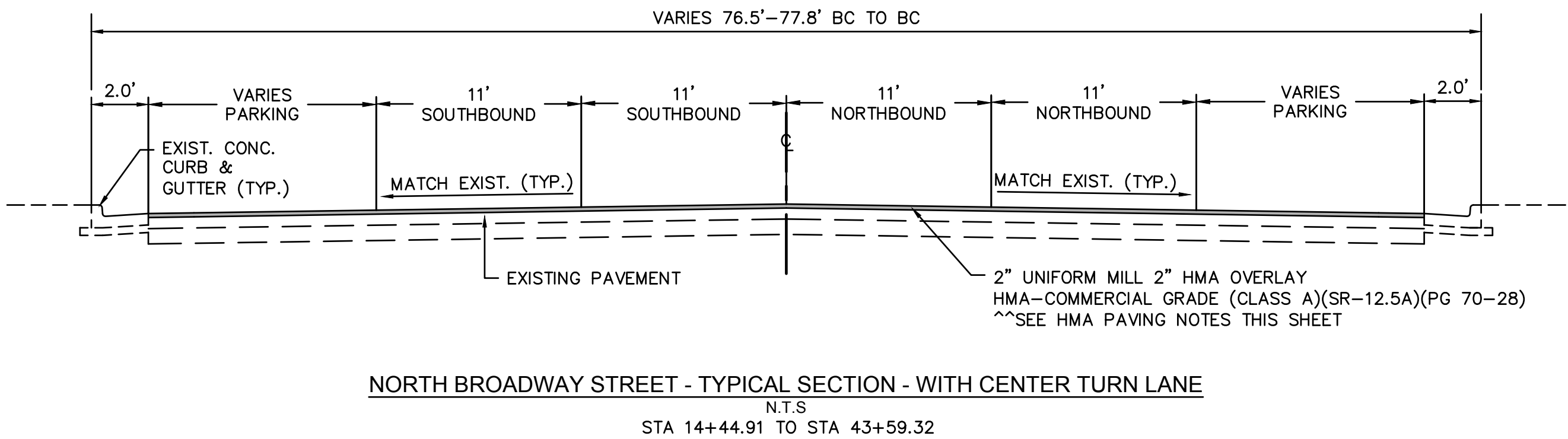


VALVE BOX CONCRETE PAD DETAIL

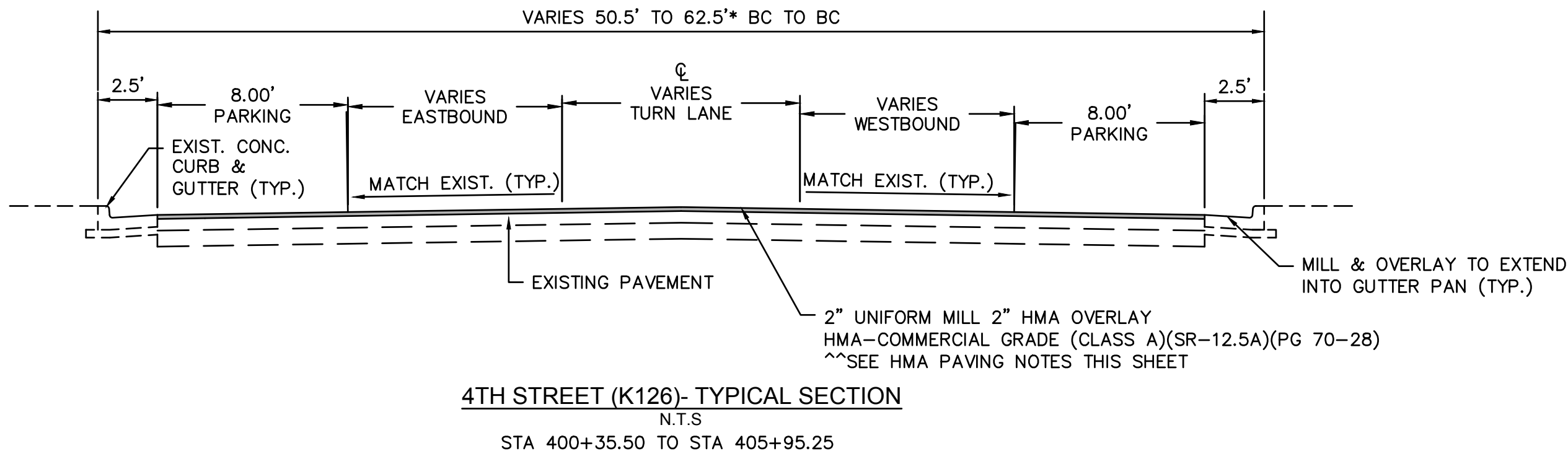
- NOTES:
1. VALVE BOX CONCRETE PADS SHALL BE CONSTRUCTED WITHIN 5 DAYS FOLLOWING CONSTRUCTION OF THE ASPHALT OVERLAY.
 2. ANY VALVE BOX NOT SHOWN ON THESE PLANS BUT DISCOVERED DURING THE MILLING PROCESS, SHALL BE ADJUSTED AS REQUIRED AND PROVIDED WITH CONCRETE PADS.
 3. CONCRETE FOR WATER VALVE CONCRETE PADS MUST MEET THE REQUIREMENTS FOR KDOT GRADE 4.0 CONCRETE.
 4. MEASUREMENT & PAYMENT: THE ENGINEER WILL MEASURE WATER VALVE CONCRETE PADS PER EACH CONCRETE PAD INSTALLED AND ACCEPTED. PAYMENT FOR "WATER VALVE CONCRETE PADS" AT THE CONTRACT UNIT PRICE SHALL BE CONSIDERED FULL COMPENSATION FOR THE SPECIFIED WORK, INCLUDING, BUT NOT LIMITED TO, ALL SAWCUTTING, REMOVALS/DISPOSALS OF EXISTING MATERIALS, CONCRETE, ADJUSTMENT BLOCKS/RINGS, LABOR MATERIALS, AND INCIDENTALS FOR EACH CONCRETE PAD INSTALLED AND ACCEPTED IN PLACE.



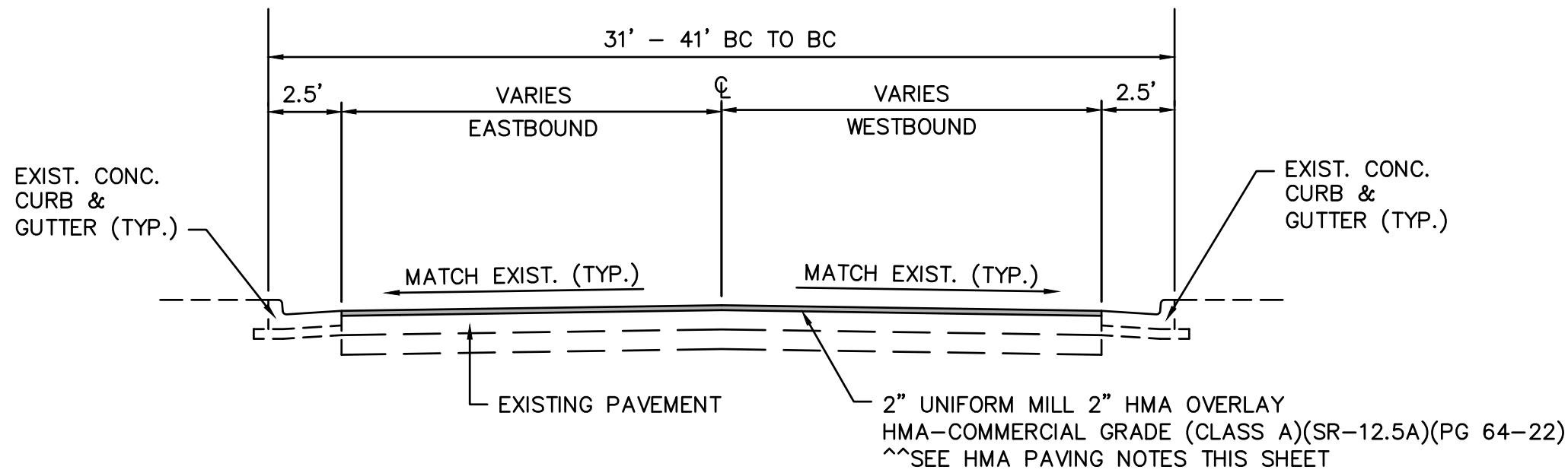
NORTH BROADWAY STREET - TYPICAL SECTION - WITH CENTER TURN LANE



NORTH BROADWAY STREET - TYPICAL SECTION - WITH CENTER TURN LANE

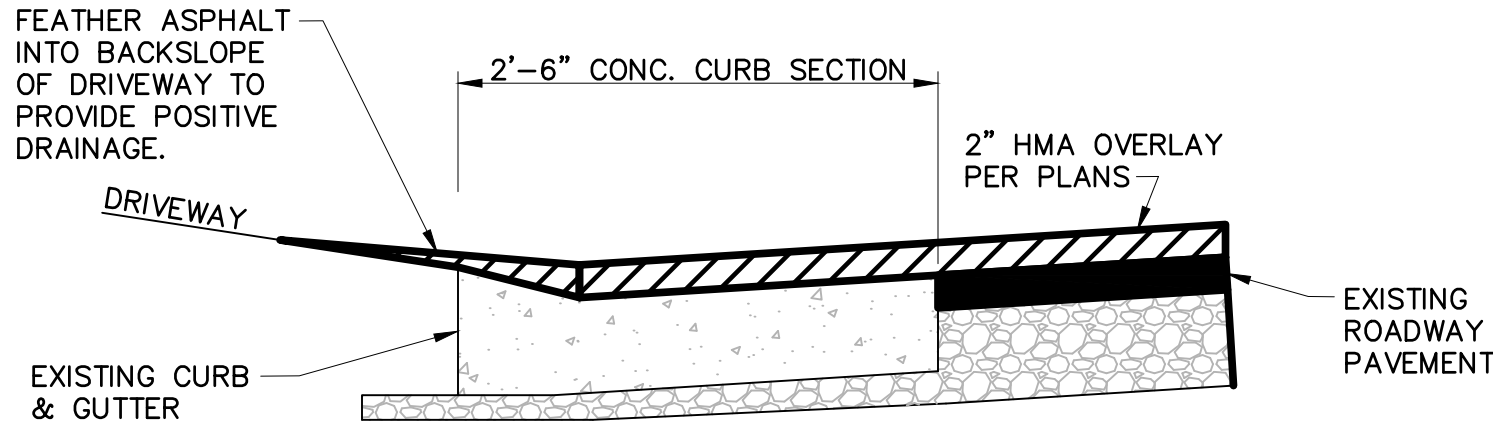


4TH STREET (K126)- TYPICAL SECTION



SIDE STREET - TYPICAL SECTION**

- ** THIS TYPICAL SECTION APPLIES TO:
- 2ND STREET (WEST)
 - 3RD STREET (WEST)
 - 5TH STREET
 - 6TH STREET
 - 7TH STREET
 - 8TH STREET
 - 9TH STREET
 - 10TH STREET
 - 11TH STREET



OVERLAY TRANSITION AT DRIVEWAYS & SIDE STREETS

KANSAS DEPARTMENT OF TRANSPORTATION
TYPICAL SECTIONS
AND CONSTRUCTION DETAILS
CCLIP-SP PROJECT, FY 2022
CITY OF PITTSBURG, KANSAS - CRAWFORD COUNTY

olsson
OLSSON - CIVIL ENGINEERING
KANSAS CERTIFICATE OF AUTHORITY # E-616
checked by: JHS date: 2/11/2021
drawn by: CTK project no.: 021-01910

306 N. BROADWAY / STE. 175 / PITTSBURG, KS 66762
620-670-5100 / olsson.com

3 SHEET OF 34

DWG: F:\2021\01501-02000\021-01910\40-Design\AutoCAD\Final Plans\Sheets\GNCV\C_TYPO1_02101910.dwg
DATE: Feb 11, 2021 1:33pm
USER: ckeute
XREFS: C:\PTBLK_02101910

NO.	DATE	REVISIONS	BY	APPD