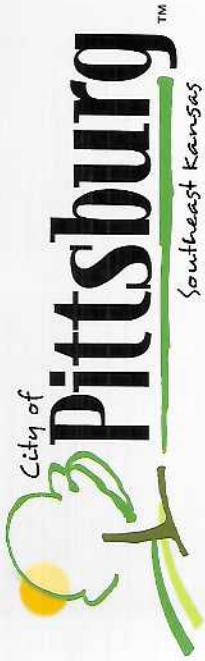


EMERGENCIES

- Every crew should have an adequate first aid kit
- Know where the nearest emergency room is located
- Know the local emergency phone number: 911
- Have someone on your crew keep a cell phone on them at all times

Thank You for
Helping Keep
Pittsburg
Clean!



**FOR MORE INFORMATION
PLEASE CONTACT:**

Department of Public Works
201 West Fourth Street
P.O. Box 688
Pittsburg, KS 66762

Phone: 620-231-4170
Fax: 620-231-2103

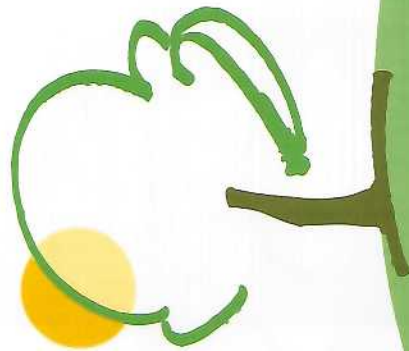
Visit us at

www.pitttks.org

ADOPT
-A-
STREET

**WHAT YOU CAN DO
TO HELP**

**KEEPING
PITTSBURG BEAUTIFUL**



Adopt -A- Street Program

The City of Pittsburgh Adopt-A-Street program is part of an effort to make our streets free of litter.

The program is voluntary, designed for all organizations and is open to groups that do not discriminate on the basis of race, religion, color, or sex. Each volunteer (adopting group) assumes responsibility for assigned section of street and agrees to remove trash and litter at least four times annually for at least two years.

The City of Pittsburgh Department of Public Works will work with each adopting group to select the specific section of street to be adopted. Some streets may not be considered for a number of reasons, usually safety-related conditions.

City's Responsibilities

Erect a sign along the street informing the public of the organization assisting with the pick-up.

Provide safety-vests, trash bags and ties.

Remove filled trash bags the first working day after litter pick-up.

Provide a list of organizations volunteering in the Adopt -A- Street program on the city's website.

Assist the group in planning an initial informational meeting.

Volunteer Requirements

Crew members should have the following minimum qualifications:

- Good physical condition including sight and hearing
- Mental Alertness
- A sense of responsibility for safety of the public and crew. All volunteers must wear an approved safety vest.
- Every crew member must be at least 18 years old
- A willingness to use good common sense

The groups responsibility is to pick up trash and litter, not mowing or trimming of shrubs or weeds.

Safety

DO NOT attempt to compact or squeeze trash sacks in an attempt to gain more room for trash. Injuries from broken or jagged objects often result from this practice.

Work one side of the street at a time, No children or pets are allowed at the litter pick-up area or in the vehicles parked by those picking up trash.

Car pool to the trash pick-up area to reduce the amount of vehicles parked in right of way.

Safety

Wear light colored clothing and your safety vest at all times.

Wear heavy gloves. Do not pick up discarded syringes or needles.

Watch your footing. Wear substantial leather shoes or boots with ankle support. Stay off steep slopes.

Wear a hat and long sleeves to avoid sunburn. Use sunscreen.

Face oncoming traffic while you work. Be prepared to move out of the way of a vehicle in an emergency.

Discontinue work in inclement weather, especially when visibility is reduced. Work during daylight hours only.

Avoid over-exertion. Drink plenty of water, especially on warm and humid days.

Have a refresher session on safety awareness before the crew goes out each time.

